

LEOPARD 50

Sonea (2025)



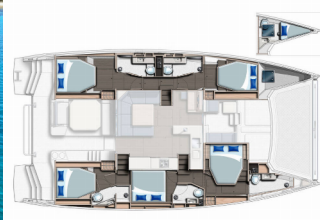
Allure Navis D.O.O. • Antuna Branka Šimića 33 • 21000 Split • Croatia

Phone: +385 95 502 0094

Phone 2: +385 99 844 2210

E-mail: info@allure-navis.com

Web: www.allure-navis.com



Yacht Base	Sukosan, D-Marin Dalmacija Marina, Croatia
Yacht ID	10301
Yacht Brands	Leopard
Yacht Name	Sonea
Production Year	2025
Length	51 Ft
Cabins	5 + 1
Berths	10 + 2 + 1
Max Persons	13
WC/Shower	5 + 1

COMFORT: Bed linen, Blankets, Cockpit cushions, Deck cushions, Mosquito nets, Sunshades, Towels

DECK: Anchor, Bathing platform, Bilge pump - Mechanic, Bimini top, Boat hook, Bosun's chair (Safe seat)(boatswain's chair), Cockpit fridge, Cockpit/stern, outside shower, Dinghy hydraulic lifting system, Dinghy with outboard engine, Electric anchor windlass, Fenders, Gangway, Grill/Barbecue/Plancha, Spare anchor (Reserve, Auxiliary anchor), Swimming ladder, Teak cockpit

ENTERTAINMENT: Bose Sound System, Fusion radio, Snorkeling equipment, Stand up paddle (SUP), TV, Underwater lights, Wi-Fi Internet

GALLEY: Coffee machine, Dishwasher, Freezer, Ice maker, Kitchen utensils (Galley equipment, cutlery), Oven, Refrigerator, Stove, Water filter, Water pump

INTERIOR: Convertible table in salon, Dryer, Electric fans in cabins, Electric toilet, Hair dryer, LED lights, Washing machine

NAVIGATION: AIS, Autopilot, Binoculars, Compass, Depthsounder, GPS chart plotter, Hand bearing compass, Log, Nautical charts, Radar, Wind instrument/Anemometer

SAFETY: Automatic Inflatable Life Jacket, Black Water Tank, Distress signals, EPIRB-Distress radio beacons, Fire extinguisher, First aid kit, Fog horn, Life belts (Safety harness), Liferaft, Sos Dan Buoy, VHF radio

SAILS: Electric winch, Lazy bag

YACHT ELECTRICS: 12V Socket, Air Conditioning, Batteries, Battery charger, Bilge pump - Electric, Generator, Heating, Inverter, Shore power connection, Solar panels, USB sockets, Water heater, Watermaker - desalinator

PRICE AND AVAILABILITY

Leopard 50 Sonea (2025)



04.07. - 11.07.2026 Not available	11.07. - 25.07.2026 Not available	25.07. - 08.08.2026 Not available	08.08. - 15.08.2026 11.125 € 22.250 €
15.08. - 22.08.2026 On option	22.08. - 29.08.2026 Not available	29.08. - 05.09.2026 Not available	05.09. - 12.09.2026 Not available
12.09. - 19.09.2026 9.900 € 16.500 €	19.09. - 26.09.2026 Not available	26.09. - 03.10.2026 Not available	03.10. - 10.10.2026 7.050 € 11.750 €
10.10. - 17.10.2026 6.000 € 10.000 €	17.10. - 24.10.2026 6.000 € 10.000 €	24.10. - 31.10.2026 6.000 € 10.000 €	31.10. - 07.11.2026 10.000 €
07.11. - 14.11.2026 10.000 €	14.11. - 21.11.2026 10.000 €	21.11. - 28.11.2026 10.000 €	28.11. - 05.12.2026 10.000 €
05.12. - 12.12.2026 10.000 €	12.12. - 19.12.2026 10.000 €	19.12. - 26.12.2026 10.000 €	